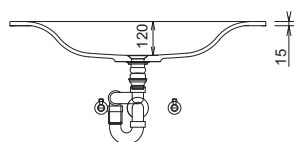
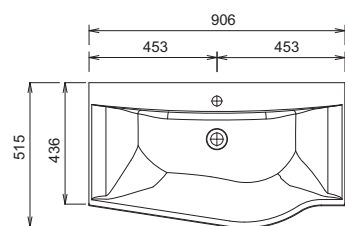
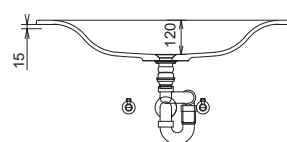
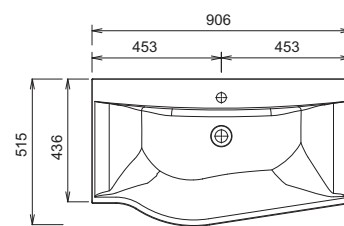


# CONCEPT LINE Laola - dimensional drawings

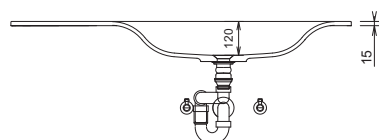
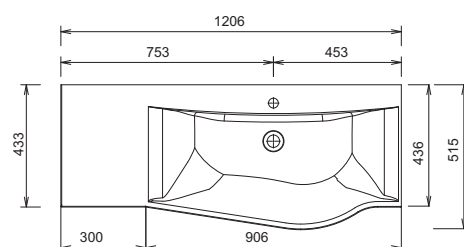
WMM 529L



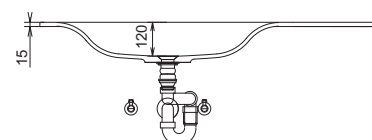
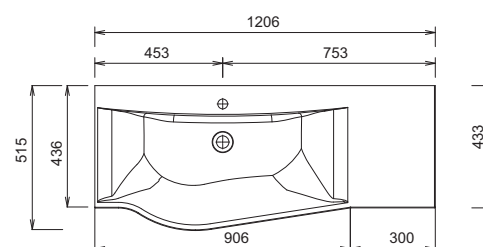
WMM 529R



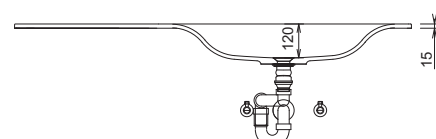
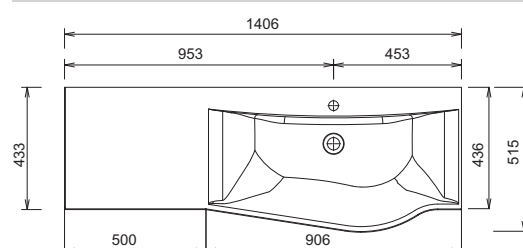
WMM 522L



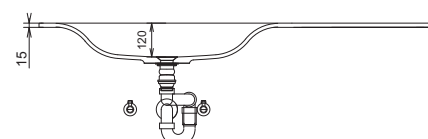
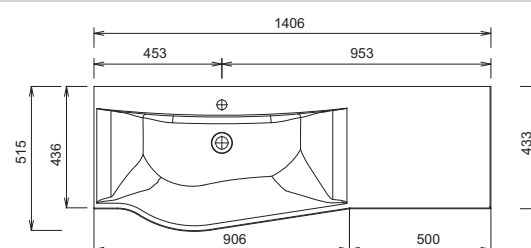
WMM 522R



WMM 524L



WMM 524R



**Washing stands without anchoring brackets have to be fixed on the wall and on the furniture-side with silicon!**

**STONEPLUS:**

The water temperature must not exceed 55° C / 131° F. Hair tinting lotions have to be removed in a few seconds, so that staining can be avoided.

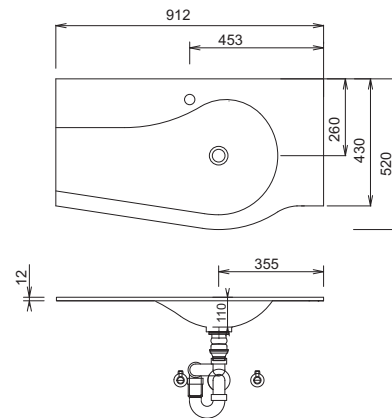
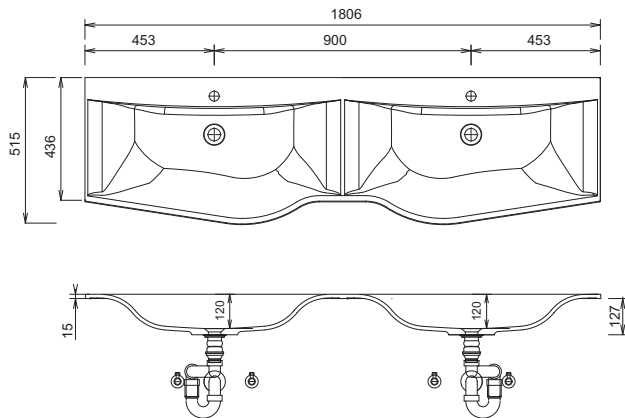
**Modifications:**

Technical modifications (+/- 5mm) and flatness modifications (DIN 18202) are subject of the usual material-specific modifications for construction materials, based on DIN 18202.

# CONCEPT LINE Laola - dimensional drawings

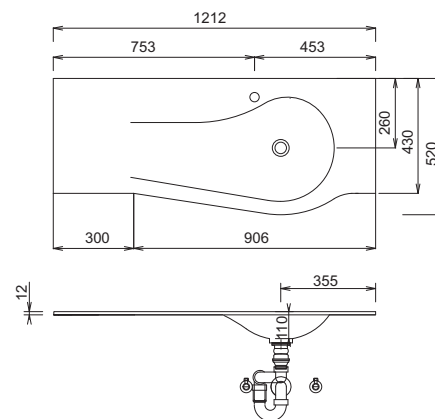
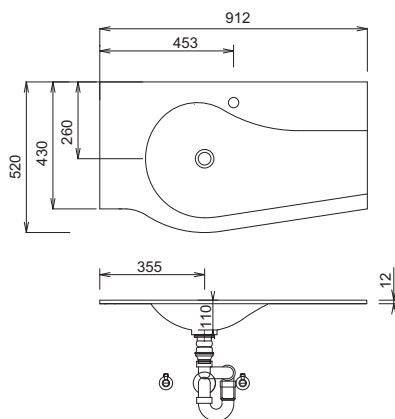
WMM 528D

WGM 509L



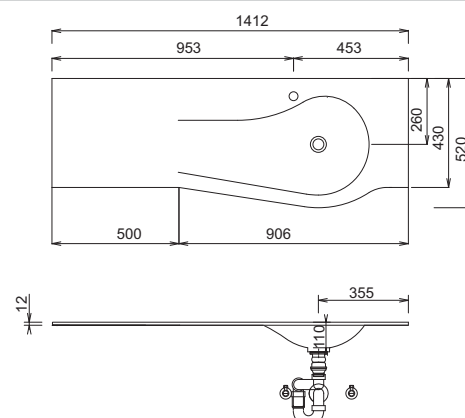
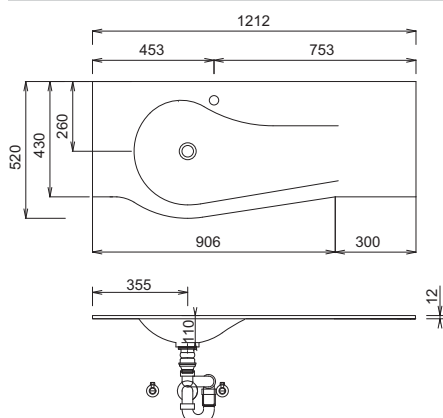
WGM 509R

WGM 512L



WGM 512R

WGM 514L



**Washing stands without anchoring brackets have to be fixed on the wall and on the furniture-side with silicon!**

**STONEPLUS:**

The water temperature must not exceed 55° C / 131° F. Hair tinting lotions have to be removed in a few seconds, so that staining can be avoided.

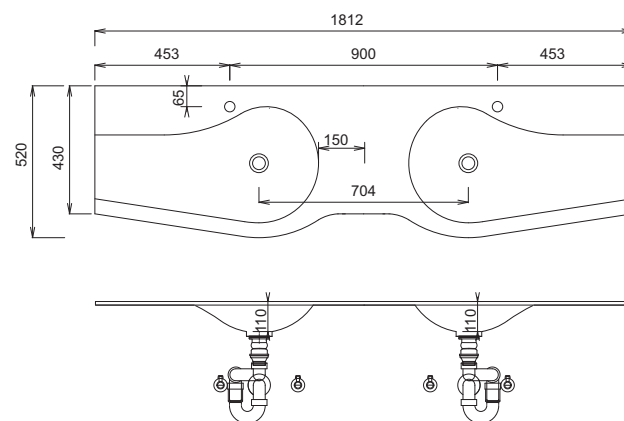
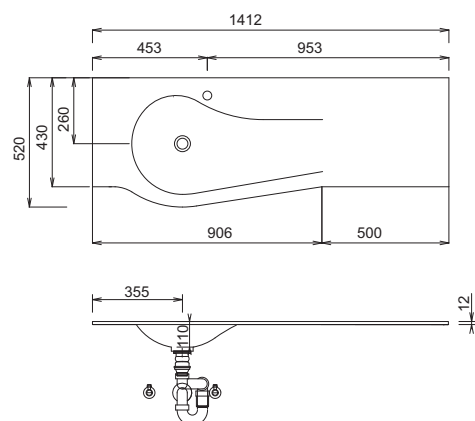
**Modifications:**

Technical modifications (+/- 5mm) and flatness modifications (DIN 18202) are subject of the usual material-specific modifications for construction materials, based on DIN 18202.

# CONCEPT LINE Laola - dimensional drawings

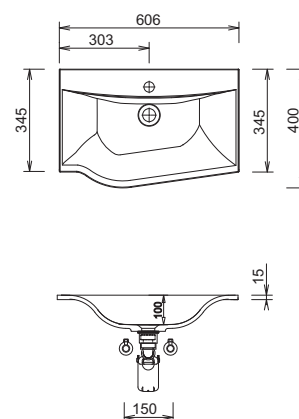
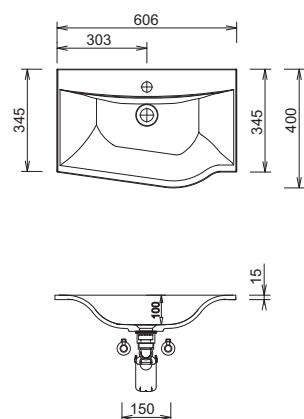
WGM 514R

WGM 518



SET FG6S 05 L

SET FG6S 05 R

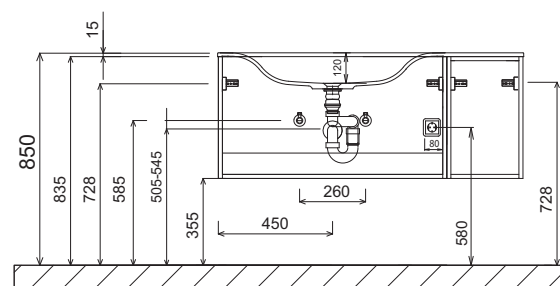
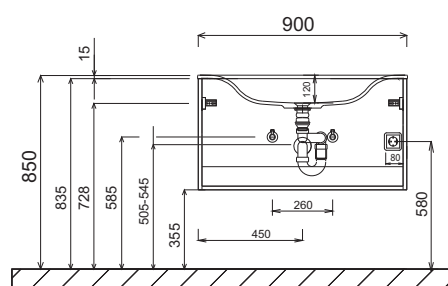


Single washbasin 900 mm

Washbasin height corresponds to the height of the Stoneplus washbasin

Single washbasin 1200 mm + 1400 mm

Washbasin height corresponds to the height of the Stoneplus washbasin



**Washing stands without anchoring brackets have to be fixed on the wall and on the furniture-side with silicon!**

STONEPLUS:

The water temperature must not exceed 55° C / 131° F. Hair tinting lotions have to be removed in a few seconds, so that staining can be avoided.

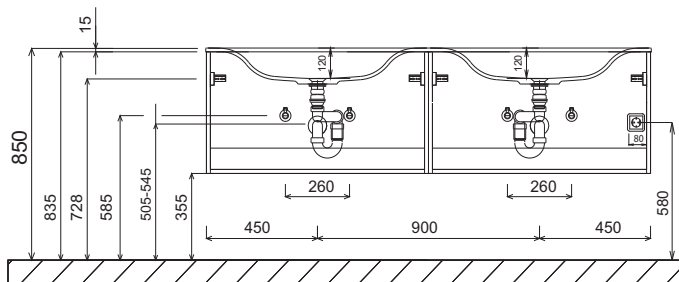
Modifications:

Technical modifications (+/- 5mm) and flatness modifications (DIN 18202) are subject of the usual material-specific modifications for construction materials, based on DIN 18202.

# CONCEPT LINE Laola - dimensional drawings

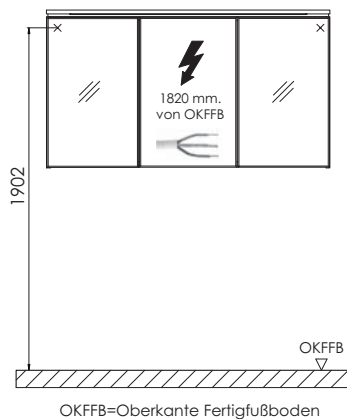
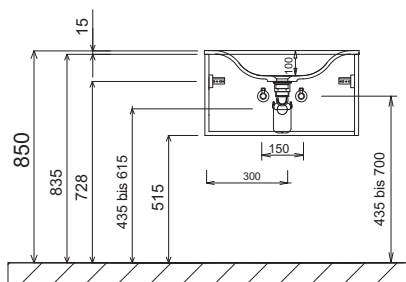
Double washbasin

Washbasin height corresponds to the height of the Stoneplus washbasin



GUEST BATHROOM

electrical connections for mirror cabinets



**Washing stands without anchoring brackets have to be fixed on the wall and on the furniture-side with silicon!**

**STONEPLUS:**

The water temperature must not exceed 55° C / 131° F. Hair tinting lotions have to be removed in a few seconds, so that staining can be avoided.

**Modifications:**

Technical modifications (+/- 5mm) and flatness modifications (DIN 18202) are subject of the usual material-specific modifications for construction materials, based on DIN 18202.