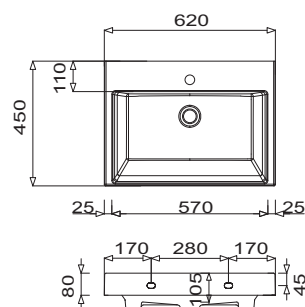
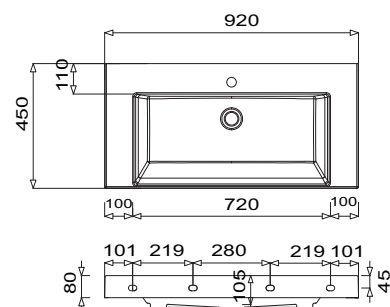


CONCEPT LINE Magic - dimensional drawings

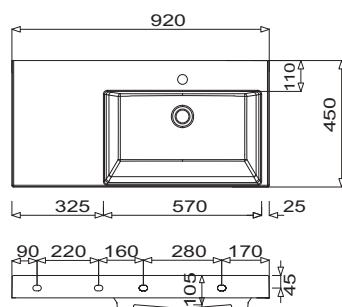
Q!flat 620



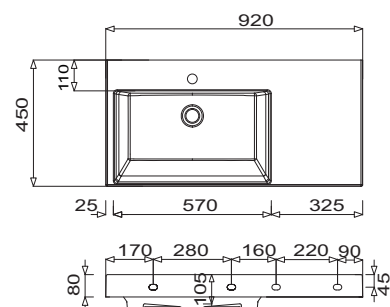
Q!flat 920



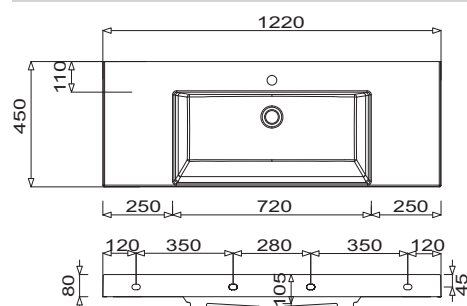
Q!flat 920 - sheft left



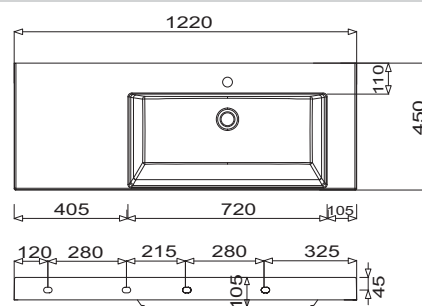
Q!flat 920 - shelf right



Q!flat 1220



Q!flat 1220 - shelf left



LEGEND

B = Width of Washbasin base units
X = Position wastewater connection

For washing stands with fixing screws, the dimensions for boring must be drawn in on-site after the washing stand has been laid on the floor unit.

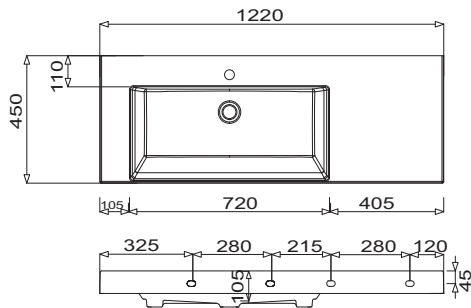
Washing stands without anchoring brackets have to be fixed on the wall and on the furniture-side with silicon!

Tolerances:

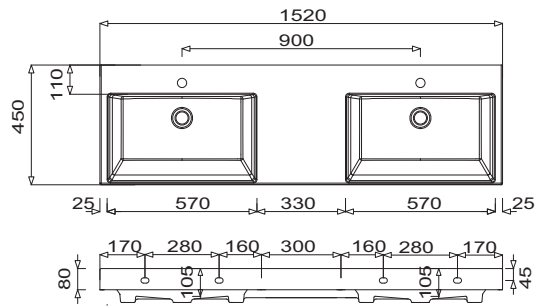
The dimensional tolerances and flatness tolerances (DIN 18202) are subject to the usual material-specific tolerances for building materials, based on DIN 18202.

CONCEPT LINE Magic - dimensional drawings

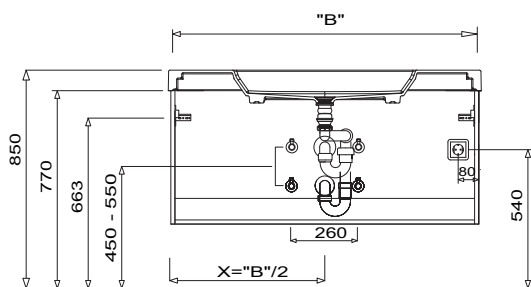
Q!flat 1220 - shelf right



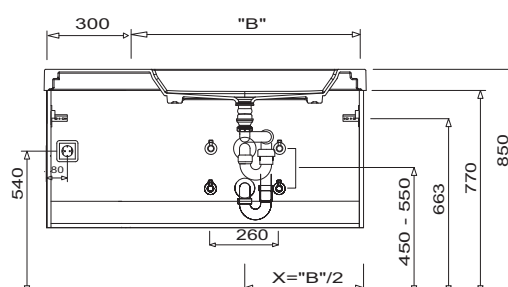
Q!flat 1520



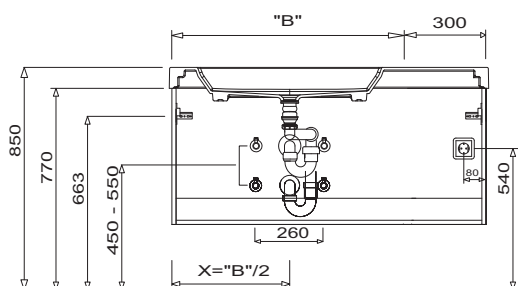
Single washbasin Q!flat - symmetrical
Washbasin base unit with handle and handleless



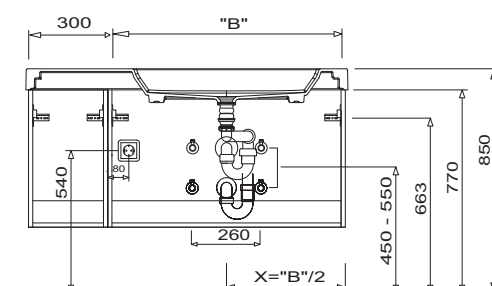
Single washbasin Q!flat - shelf left
Washbasin base unit (2 drawers) with handle and handleless



Single washbasin Q!flat - shelf right
Washbasin base unit (2 drawers) with handle and handleless



Single washbasin Q!flat - shelf left
Washbasin base unit (4 drawers) with handle and handleless



For washing stands with fixing screws, the dimensions for boring must be drawn in on-site after the washing stand has been laid on the floor unit.

Washing stands without anchoring brackets have to be fixed on the wall and on the furniture-side with silicon!

Tolerances:

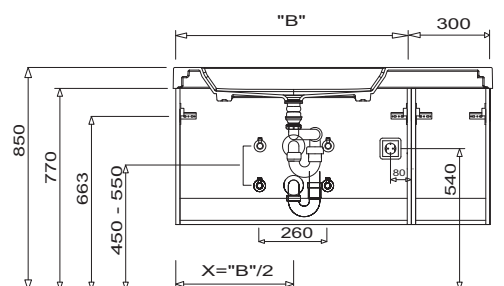
The dimensional tolerances and flatness tolerances (DIN 18202) are subject to the usual material-specific tolerances for building materials, based on DIN 18202.

LEGEND

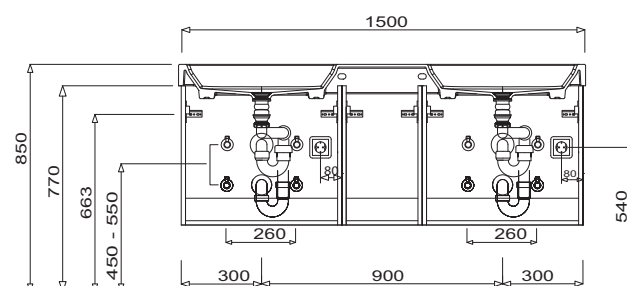
B = Width of Washbasin base units
X = Position wastewater connection

CONCEPT LINE Magic - dimensional drawings

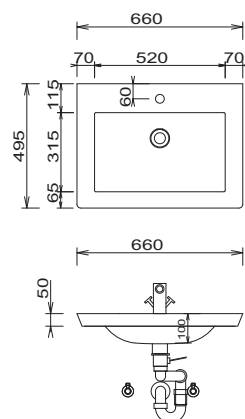
Single washbasin Q!flat - shelf right
Washbasin base unit (4 drawers) with handle and handleless



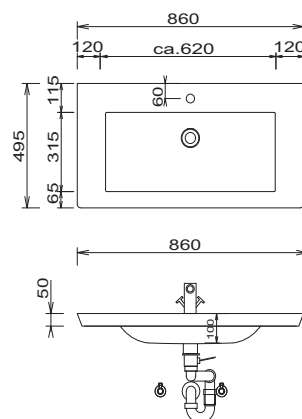
Double washbasin Q!flat
Washbasin base unit with handle and handleless



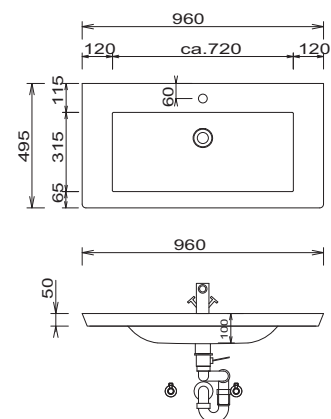
Valencia 660



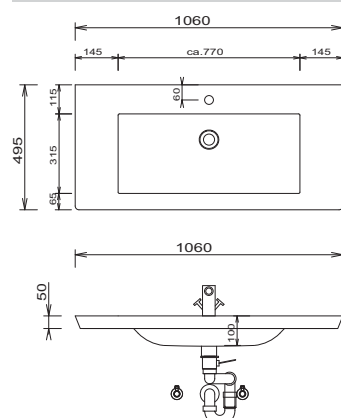
Valencia 860



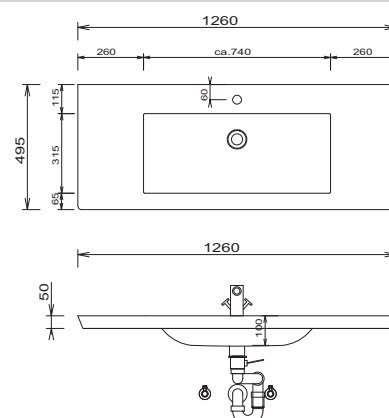
Valencia 960



Valencia 1060



Valencia 1260



LEGEND

B = Width of Washbasin base units
X = Position wastewater connection

For washing stands with fixing screws, the dimensions for boring must be drawn in on-site after the washing stand has been laid on the floor unit.

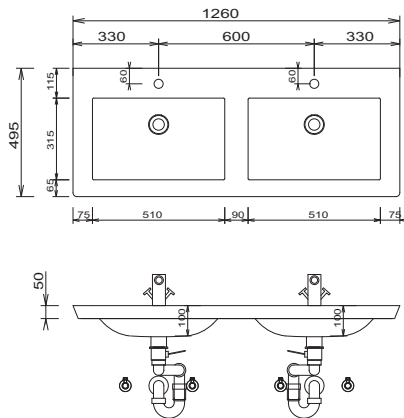
Washing stands without anchoring brackets have to be fixed on the wall and on the furniture-side with silicon!

Tolerances:

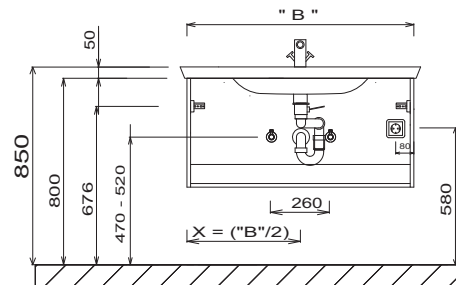
The dimensional tolerances and flatness tolerances (DIN 18202) are subject to the usual material-specific tolerances for building materials, based on DIN 18202.

CONCEPT LINE Magic - dimensional drawings

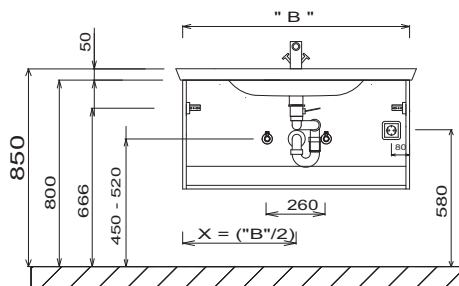
Valencia 1260 Double washbasin



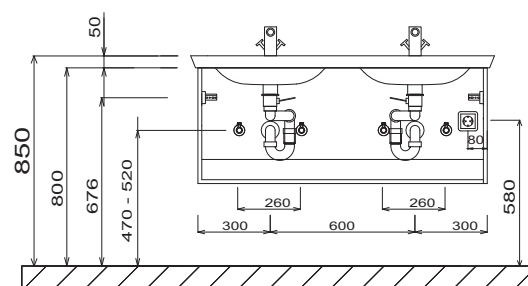
Single washbasin Valencia
Washbasin base cabinet with handle



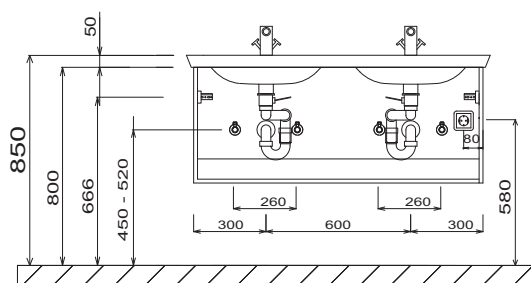
Single washbasin Valencia
Washbasin base cabinet handleless



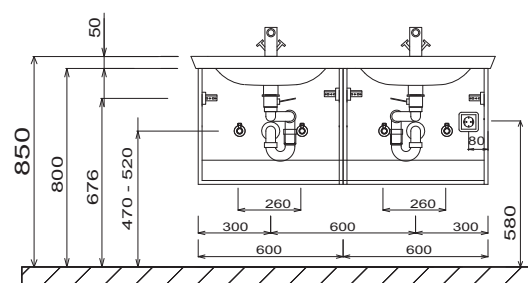
Double washbasin Valencia
Washbasin base cabinet with handle



Double washbasin Valencia
Washbasin base cabinet handleless



Double washbasin Valencia
Washbasin base cabinet with handle



For washing stands with fixing screws, the dimensions for boring must be drawn in on-site after the washing stand has been laid on the floor unit.

Washing stands without anchoring brackets have to be fixed on the wall and on the furniture-side with silicon!

Tolerances:

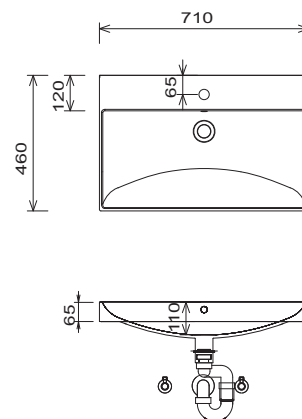
The dimensional tolerances and flatness tolerances (DIN 18202) are subject to the usual material-specific tolerances for building materials, based on DIN 18202.

LEGEND

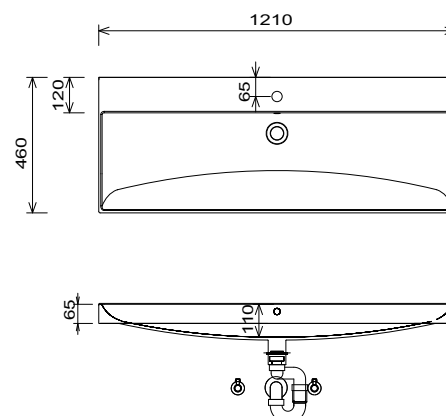
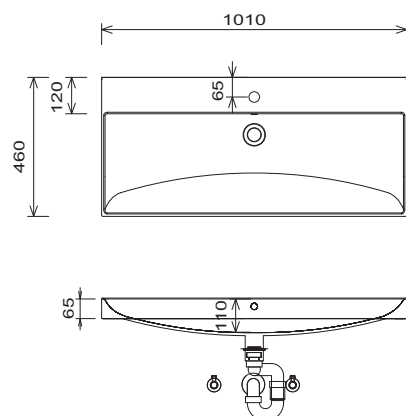
B = Width of Washbasin base units
X = Position wastewater connection

Double washbasin Valencia
Washbasin base cabinet handleless

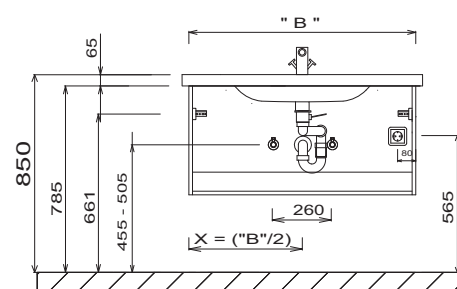
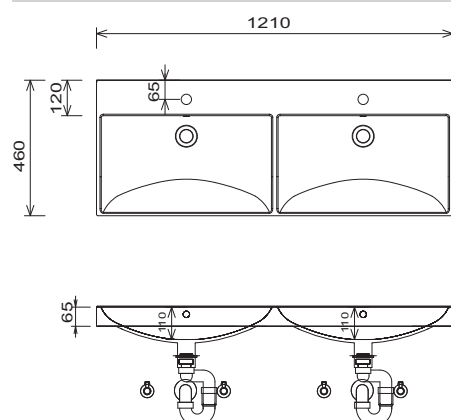
Technical drawing of the SCS 600 vanity unit. The side view (left) shows a total height of 850 mm, a main body height of 800 mm, a countertop thickness of 50 mm, and a mounting height of 666 mm. The depth is 450 - 520 mm. The top view (right) shows a total width of 600 mm and a total depth of 580 mm. The vanity features two basins, each 260 mm wide, with a 300 mm gap between them. The central section is 600 mm wide. The depth is divided into 300 mm sections on either side of the 600 mm central section. The drawing includes details of the basins, faucets, and storage compartments.



K-Line 1210



Single washbasin K-Line
Washbasin base cabinet with handle



B = Width of Washbasin base units
X = Position wastewater connection

For washing stands with fixing screws, the dimensions for boring must be drawn in on-site after the washing stand has been laid on the floor unit.

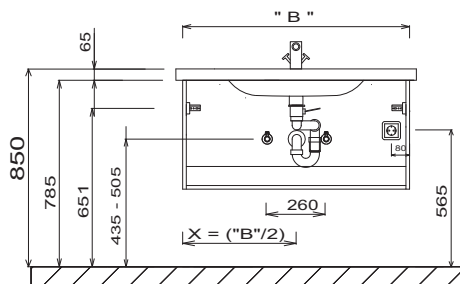
Washing stands without anchoring brackets have to be fixed on the wall and on the furniture-side with silicon!

Tolerances:

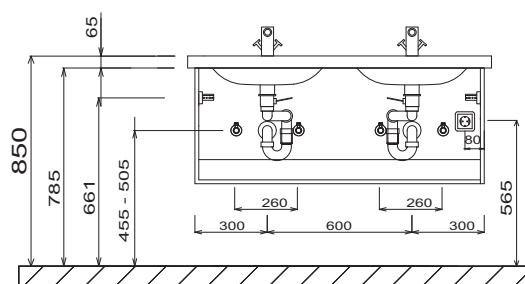
The dimensional tolerances and flatness tolerances (DIN 18202) are subject to the usual material-specific tolerances for building materials, based on DIN 18202.

CONCEPT LINE Magic - dimensional drawings

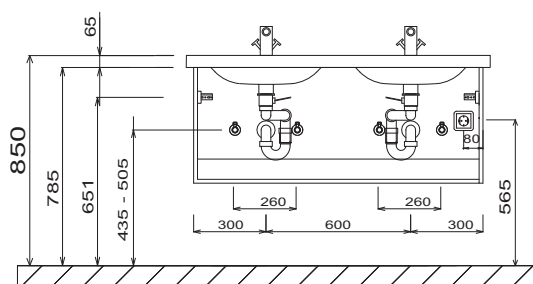
Single washbasin K-Line
Washbasin base cabinet handleless



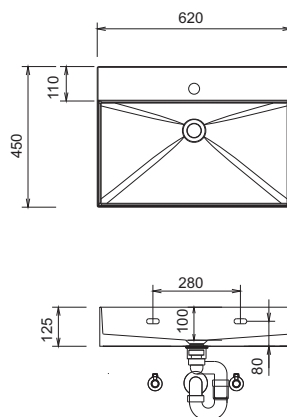
Double washbasin K-Line
Washbasin base cabinet with handle



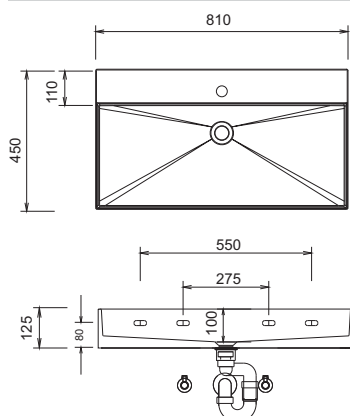
Double washbasin K-Line
Washbasin base cabinet handleless



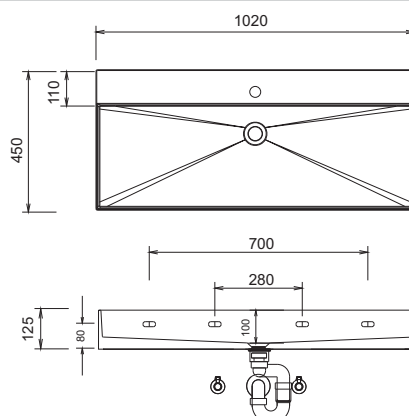
Squared 620



Squared 810



Squared 1020



For washing stands with fixing screws, the dimensions for boring must be drawn in on-site after the washing stand has been laid on the floor unit.

Washing stands without anchoring brackets have to be fixed on the wall and on the furniture-side with silicon!

Tolerances:

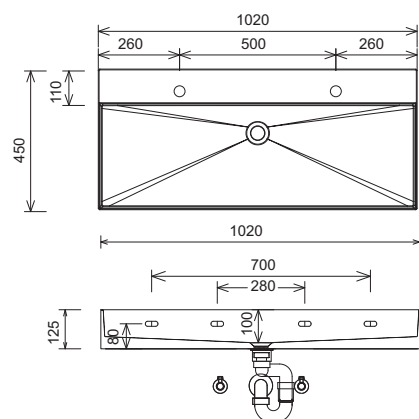
The dimensional tolerances and flatness tolerances (DIN 18202) are subject to the usual material-specific tolerances for building materials, based on DIN 18202.

LEGEND

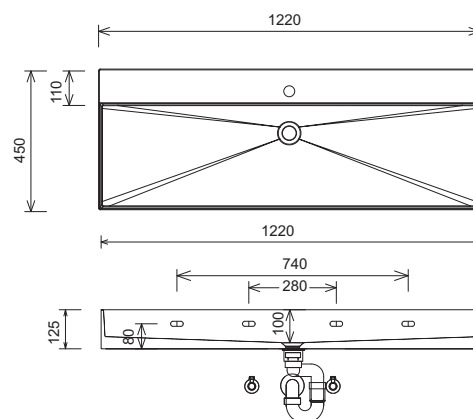
B = Width of Washbasin base units
X = Position wastewater connection

CONCEPT LINE Magic - dimensional drawings

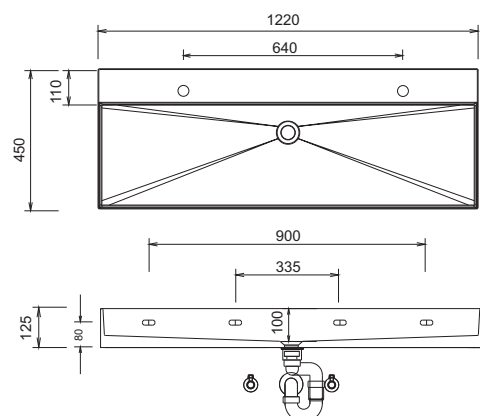
Squared 1020 Double washbasin



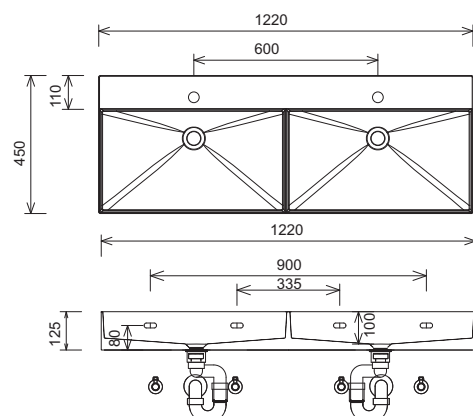
Squared 1220



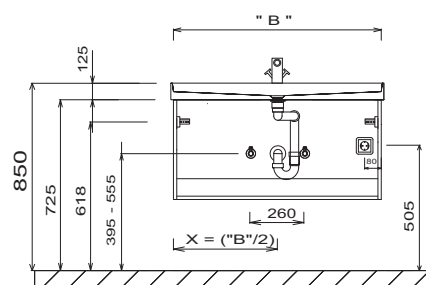
Squared 1220 Double washbasin



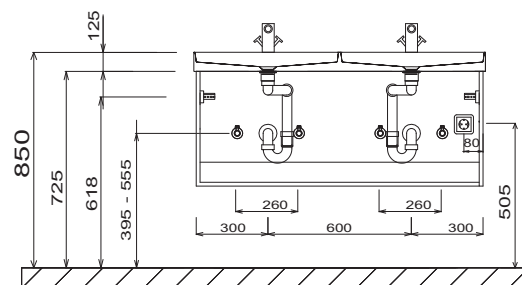
Squared 1220 Double washbasin



Single washbasin Squared
Washbasin base unit with handle and handleless



Double washbasin Squared
Washbasin base unit with handle and handleless



LEGEND

B = Width of Washbasin base units
X = Position wastewater connection

For washing stands with fixing screws, the dimensions for boring must be drawn in on-site after the washing stand has been laid on the floor unit.

Washing stands without anchoring brackets have to be fixed on the wall and on the furniture-side with silicon!

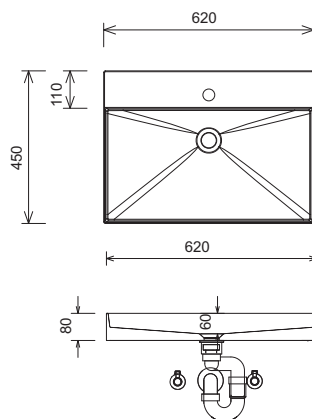
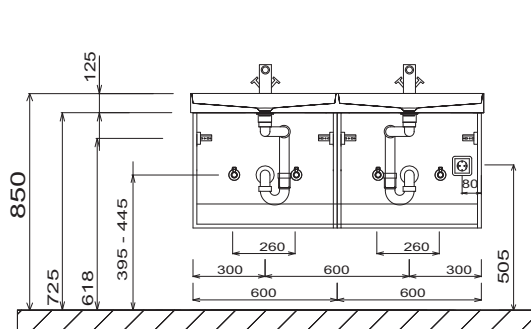
Tolerances:

The dimensional tolerances and flatness tolerances (DIN 18202) are subject to the usual material-specific tolerances for building materials, based on DIN 18202.

CONCEPT LINE Magic - dimensional drawings

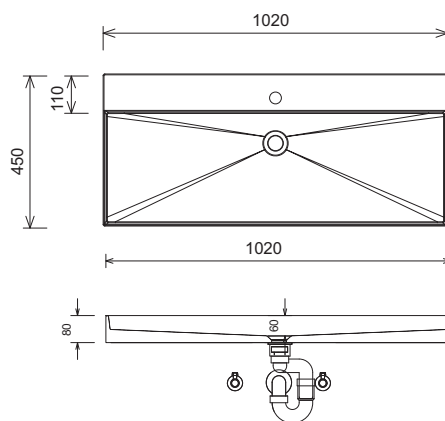
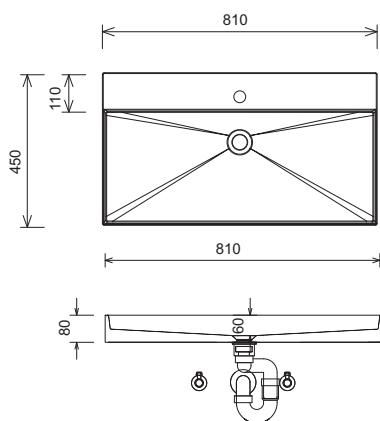
Double washbasin Squared
Washbasin base unit with handle and handleless

Till 620



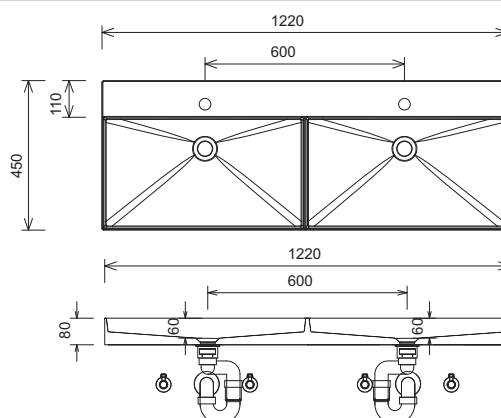
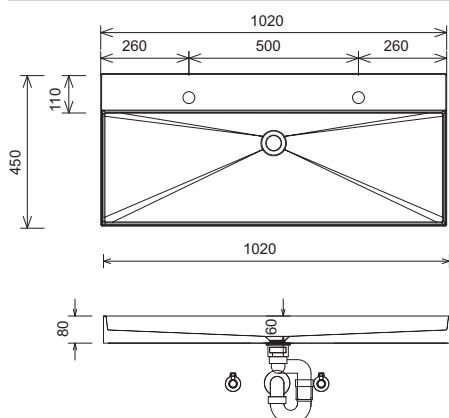
Till 810

Till 1020



Till 1020 Double washbasin

Till 1220 Double washbasin



For washing stands with fixing screws, the dimensions for boring must be drawn in on-site after the washing stand has been laid on the floor unit.

Washing stands without anchoring brackets have to be fixed on the wall and on the furniture-side with silicon!

Tolerances:

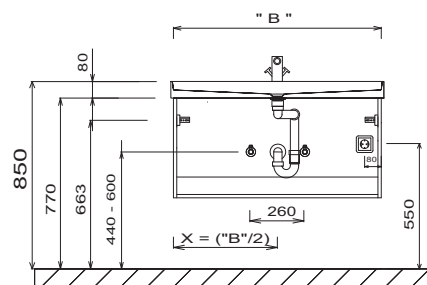
The dimensional tolerances and flatness tolerances (DIN 18202) are subject to the usual material-specific tolerances for building materials, based on DIN 18202.

LEGEND

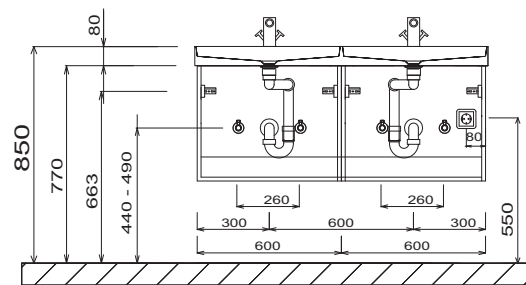
B = Width of Washbasin base units
X = Position wastewater connection

CONCEPT LINE Magic - dimensional drawings

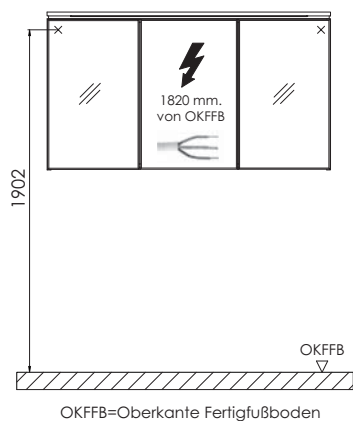
Single washbasin Till
Washbasin base unit with handle and handleless



Double washbasin Till
Washbasin base unit with handle and handleless



electrical connections for mirror cabinets



LEGEND

B = Width of Washbasin base units
X = Position wastewater connection

For washing stands with fixing screws, the dimensions for boring must be drawn in on-site after the washing stand has been laid on the floor unit.

Washing stands without anchoring brackets have to be fixed on the wall and on the furniture-side with silicon!

Tolerances:

The dimensional tolerances and flatness tolerances (DIN 18202) are subject to the usual material-specific tolerances for building materials, based on DIN 18202.