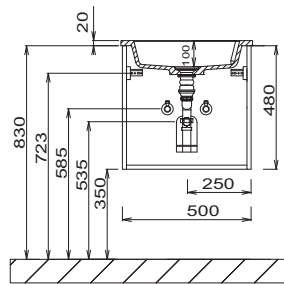
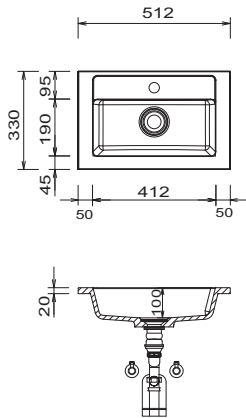


CONCEPT LINE Reflex - dimensional drawings

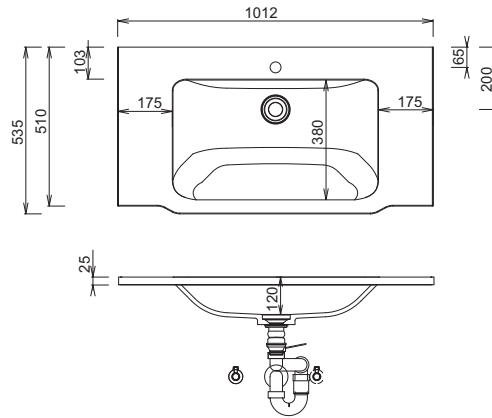
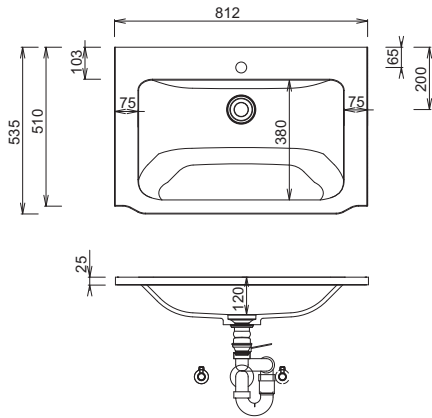
WMS 2305 61 (Straight)

GUEST BATHROOM



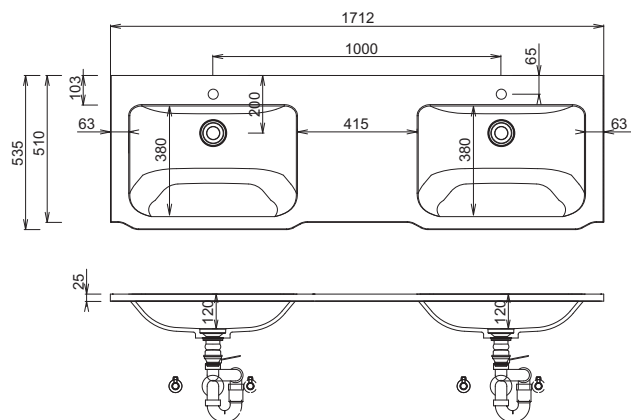
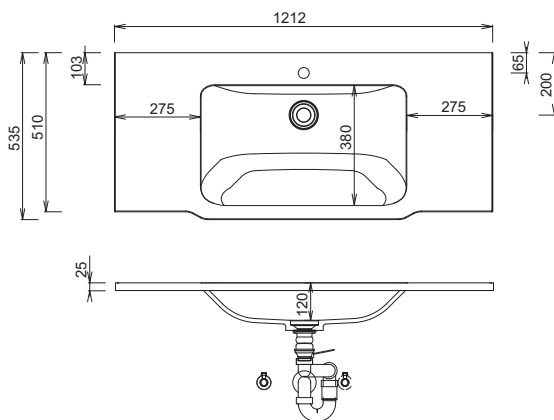
WMS 3508 61

WMS 3510 61



WMS 3512 61

WMS 352D 61



STONEPLUS:

The water temperature must not exceed 55° C / 131° F. Hair tinting lotions have to be removed in a few seconds, so that staining can be avoided.

Modifications:

Technical modifications (+/- 5mm) and flatness modifications (DIN 18202) are subject of the usual material-specific modifications for construction materials, based on DIN 18202.

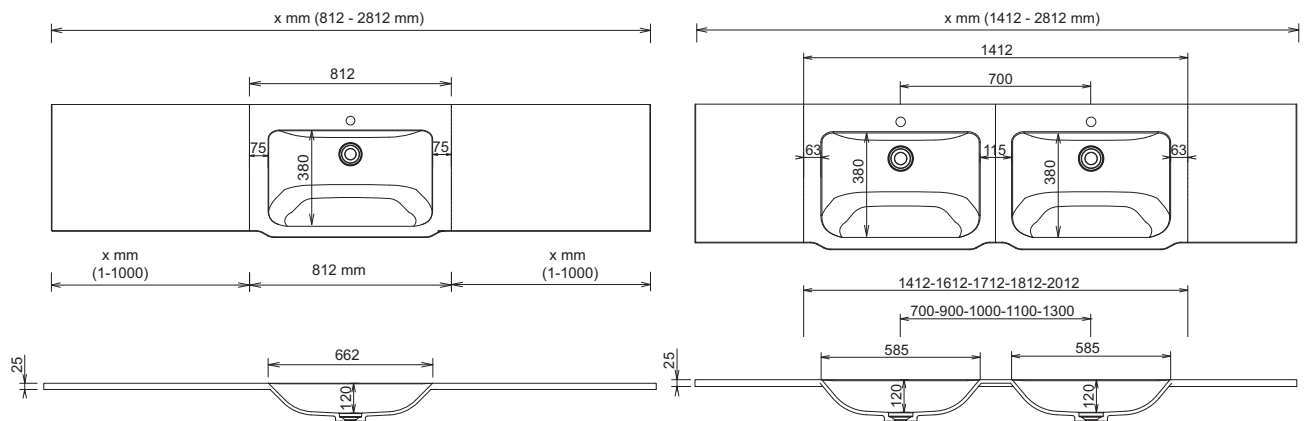
LEGEND

S = STONEPLUS washbasin
G = Glass washbasin
B = Width of Washbasin base units
X = Position wastewater connection

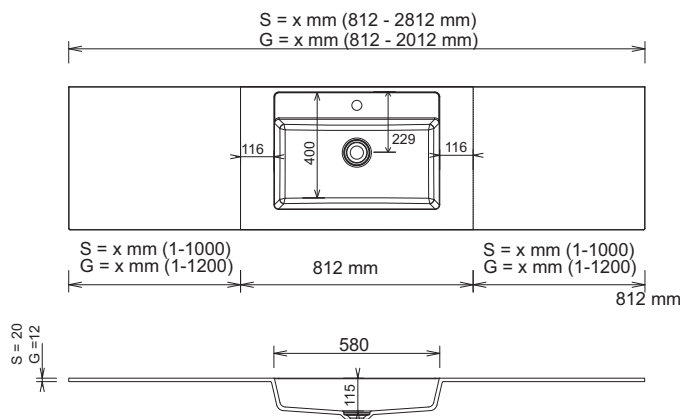
CONCEPT LINE Reflex - dimensional drawings

WMS 350V 61

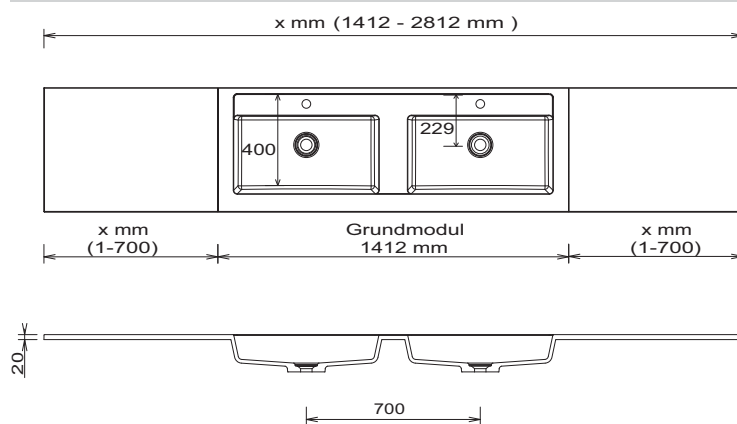
WMS 35DV 61



WMS / WGS 230V



WMS 23DV 61



LEGEND

S = STONEPLUS washbasin
 G = Glass washbasin
 B = Width of Washbasin base units
 X = Position wastewater connection

STONEPLUS:

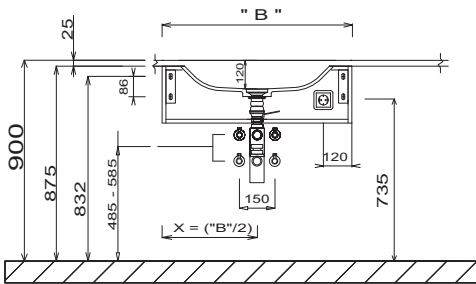
The water temperature must not exceed 55° C / 131° F. Hair tinting lotions have to be removed in a few seconds, so that staining can be avoided.

Modifications:

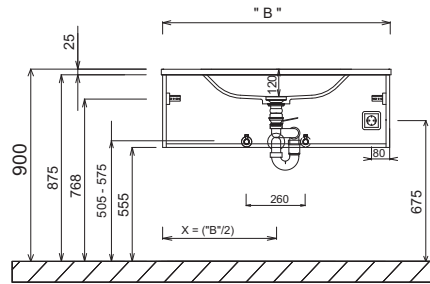
Technical modifications (+/- 5mm) and flatness modifications (DIN 18202) are subject of the usual material-specific modifications for construction materials, based on DIN 18202.

CONCEPT LINE Reflex - dimensional drawings

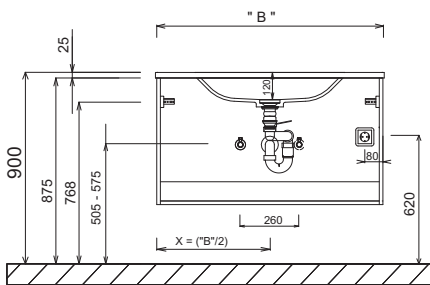
Single washbasin base cabinet height 240 mm
Washbasin height corresponds to the height of the Shape washbasin



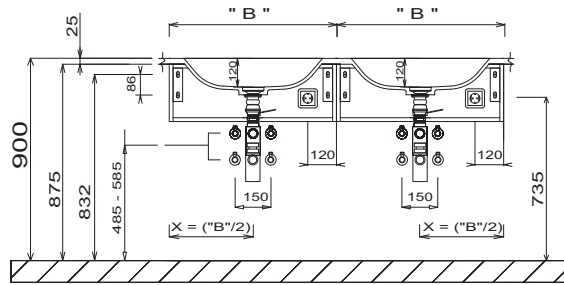
Single washbasin base cabinet height 320 mm
Washbasin height corresponds to the height of the Shape washbasin



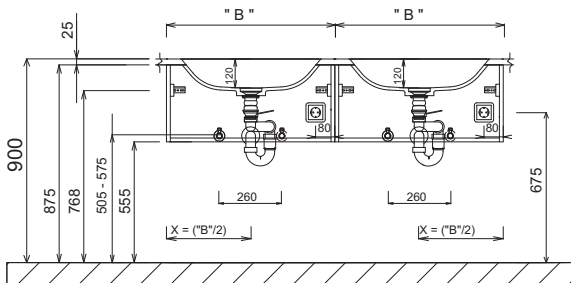
Single washbasin base cabinet height 480 mm & 560 mm
Washbasin height corresponds to the height of the Shape washbasin



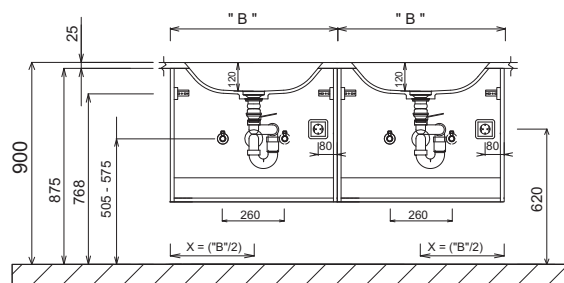
Double washbasin base cabinet height 240 mm
Washbasin height corresponds to the height of the Shape washbasin



Double washbasin base cabinet height 320 mm
Washbasin height corresponds to the height of the Shape washbasin



Double washbasin base cabinet height 480 mm & 560 mm
Washbasin height corresponds to the height of the Shape washbasin



STONEPLUS:

The water temperature must not exceed 55° C / 131° F. Hair tinting lotions have to be removed in a few seconds, so that staining can be avoided.

Modifications:

Technical modifications (+/- 5mm) and flatness modifications (DIN 18202) are subject of the usual material-specific modifications for construction materials, based on DIN 18202.

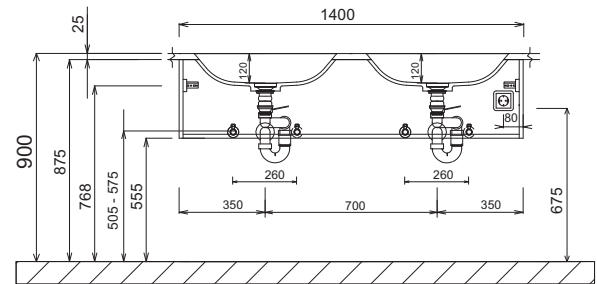
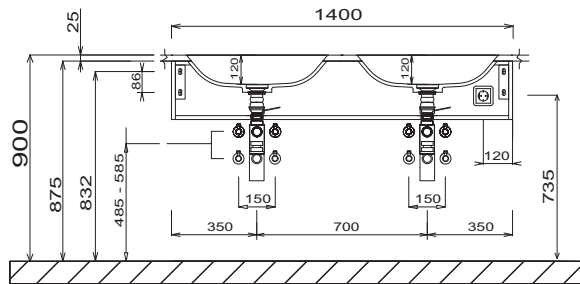
LEGEND

- S = STONEPLUS washbasin
- G = Glass washbasin
- B = Width of Washbasin base units
- X = Position wastewater connection

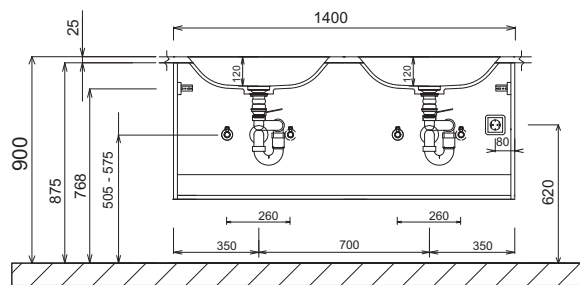
CONCEPT LINE Reflex - dimensional drawings

Double washbasin base cabinet height 240 mm
Washbasin height corresponds to the height of the Shape washbasin

Double washbasin base cabinet height 320 mm
Washbasin height corresponds to the height of the Shape washbasin



Double washbasin base cabinet height 480 mm & 560 mm
Washbasin height corresponds to the height of the Shape washbasin



LEGEND
 S = STONEPLUS washbasin
 G = Glass washbasin
 B = Width of Washbasin base units
 X = Position wastewater connection

STONEPLUS:
 The water temperature must not exceed 55° C / 131° F. Hair tinting lotions have to be removed in a few seconds, so that staining can be avoided.
Modifications:
 Technical modifications (+/- 5mm) and flatness modifications (DIN 18202) are subject of the usual material-specific modifications for construction materials, based on DIN 18202.