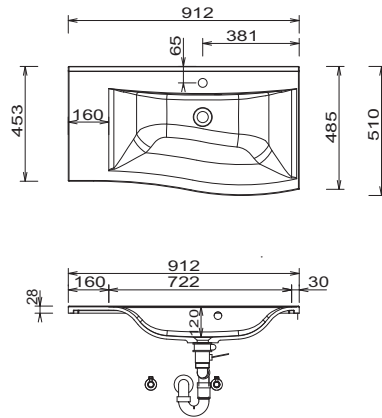
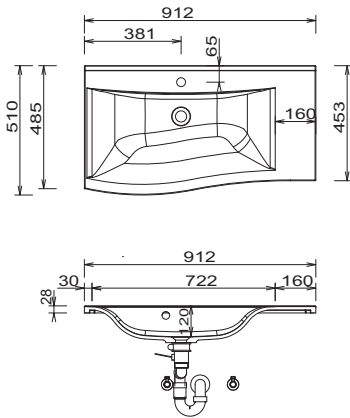


EASY • LINE brio - dimensional drawings

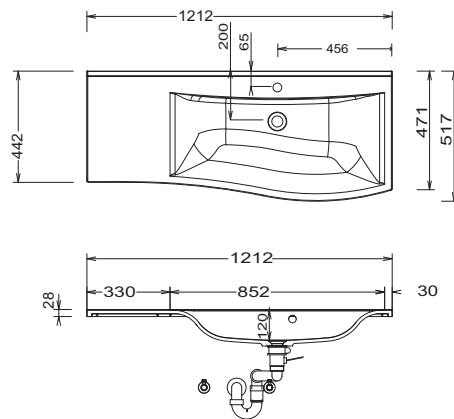
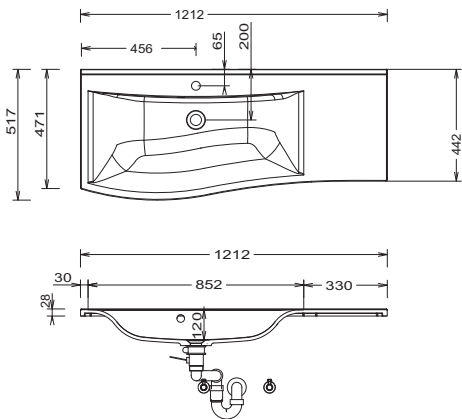
SET P209 (B)R / SET P229 R

SET P209 (B)L / SET P229 L



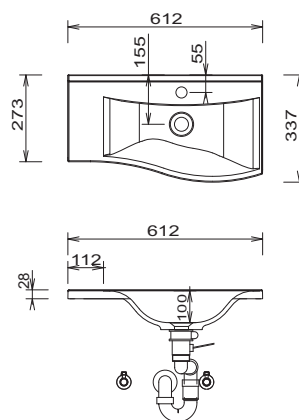
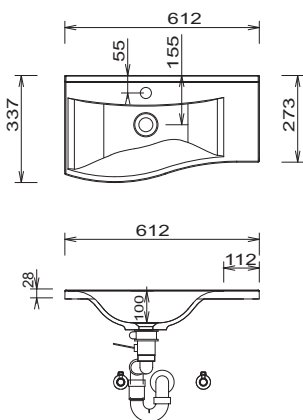
SET P212 (B)R / SET P222 R

SET P212 (B)L / SET P222 L



SET P206 (B)R

SET P206 (B)L



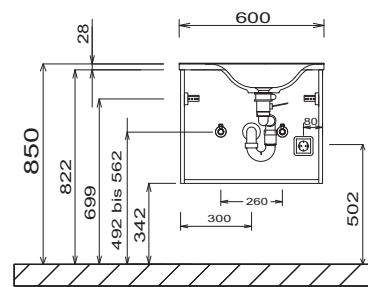
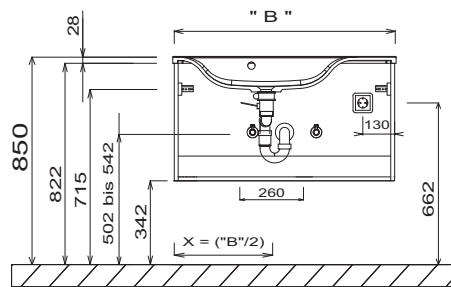
Cast mineral:
 The water temperature must not exceed 55° C / 131° F. Hair tinting lotions have to be removed immediately, so that staining can be avoided.
 Modifications:
 Technical modifications (+/- 5mm) and flatness modifications (DIN 18202) are subject of the usual material-specific modifications for construction materials, based on DIN 18202.

LEGEND
 B = Width of Washbasin base units
 X = Position wastewater connection

EASY • LINE brio - dimensional drawings

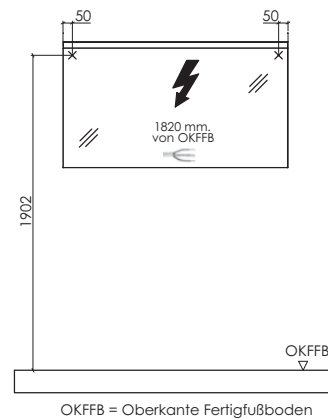
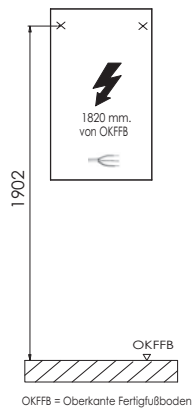
Single washbasin

GUEST BATHROOM

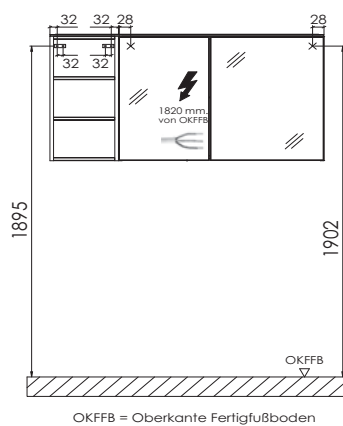


Mirror 400 mm

FSA 43xx 11



electrical connections for mirror cabinets



LEGEND
 B = Width of Washbasin base units
 X = Position wastewater connection

Cast mineral:
 The water temperature must not exceed 55° C / 131° F. Hair tinting lotions have to be removed immediately, so that staining can be avoided.
Modifications:
 Technical modifications (+/- 5mm) and flatness modifications (DIN 18202) are subject of the usual material-specific modifications for construction materials, based on DIN 18202.